



# RETURN TO NATURE

## 回归自然本色

### DESIGN CONCEPT | 设计理念

Home is an undefended place where everyone can have physical and mental rest. People have different living demands, but each person wants their home to be comfortable, natural and relaxed. Home and nature, the nature of home, returning to nature, bringing nature into life, all create more natural vocabularies for living space. In this case, the designer presents us a modern, natural, fresh and lively living space. The natural warm and soft wood spread in each region, conveys a life attitude that seeks the

家是每个人身心休憩的不设防之地。不同的人对家的居住诉求也不一样，但万变不离其宗，即舒适、自然、放松。自然之家，家之自然，让家回归自然本色，让大自然走入生活，为居家空间带来更多自然的语汇。设计师在本案中为我们呈现了一个现代、自然、清新、有氧的居家空间，天然温润的木色行走于每个区域，传达了一

real self and returning back to ones origins. The open-space setting maximizes the use of spatial dimensions, thereby fulfilling the desire for emotional interaction between family members. The insertion of smooth and straight lines and the combination of neat and simple geometric furnishings interpret the space's spiritual pursuit of being indifferent and elegant. The spatial planning has penetrability and liquidity, but also keeps different spatial separations and unveils the line of sight along with connected spaces.

份寻求真我、回归本质的生活态度。开放式空间设定，最大化地利用了空间尺寸，进而也成全了家人之间情感互动之意，流畅直接的线条穿插，利落直白的几何形体摆置组合，诠释了空间淡泊、清雅的精神追求。空间规划拥有穿透性、流动性，但又保有不同空间的区隔，让视线随着串联的空间顺势展开。

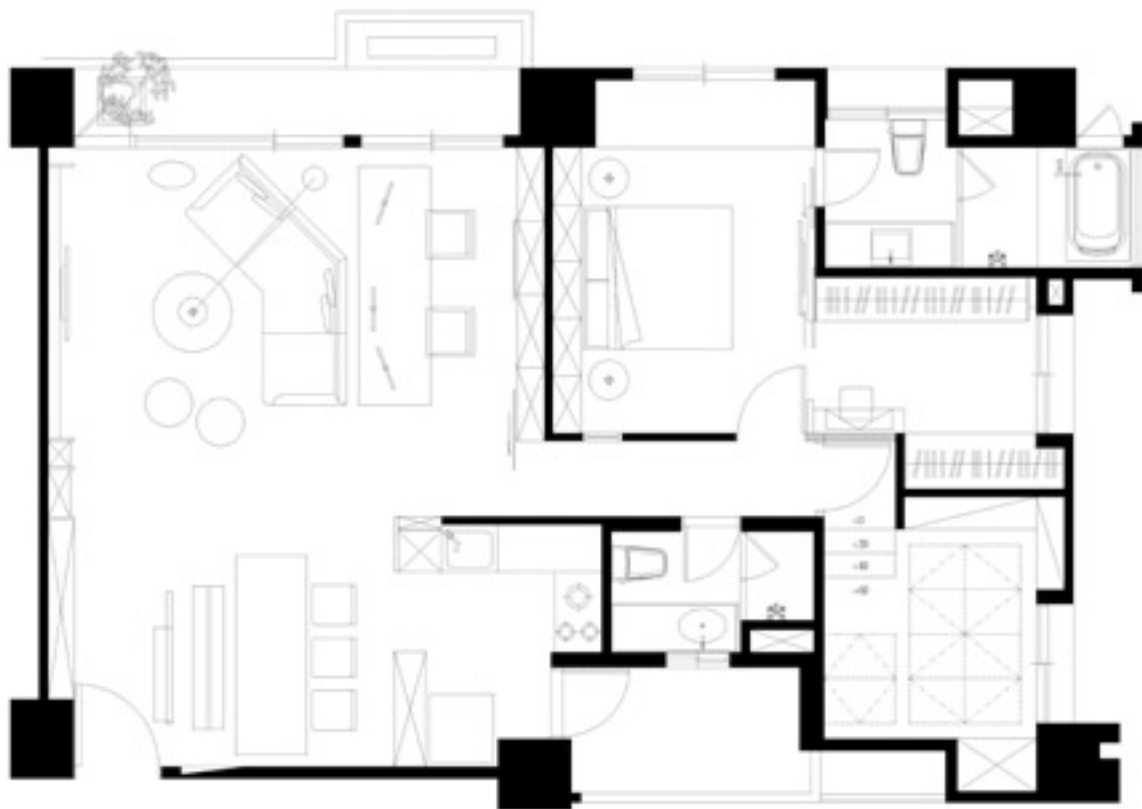
- PROJECT AREA | 项目面积  
172 m<sup>2</sup>
- PROJECT LOCATION | 项目地点  
Taipei City, Taiwan 台湾台北
- DESIGN COMPANY | 设计公司  
YuanKing Interior Design  
原境国际室内装修设计工程有限公司
- DESIGNER | 设计师  
Vita 邱郁雯
- PHOTOGRAPHER | 摄影师  
Jiahe Guo 郭家和
- MAIN MATERIALS | 主要材料  
platane wood, black bodhi wood veneer,  
stainless steel, gray mirror, gray glass  
etc.  
梧桐木、黑菩提木皮、不锈钢、灰镜、灰玻  
璃等















## DECORATIVE MATERIALS | 装饰材料

In the selection of interior materials stone, wood, imitate mould coatings and other materials with natural cracks are used to express tension of the facade, and then bring out a warm rustic space environment by their textures. The designer has a special understanding of the space, by applying simple and neat linear segmentation design resolves the conflict between materials. This allows the space to be visually more smooth and harmonious. The primary wall along the bedside in the master bedroom is vertically created by wood, in a primary color, its segmentation of width and depth highlights the original natural and rugged charm of platane wood veneer. This becomes a main visual line stressed in the master bedroom; its texture of log extends to the bed by the window. The soft leaden cotton veneers, matched with the natural wood colored cabinet, not only create spatial function and enjoyment of the views, but also add a comfortable and free sense to the bedroom.

室内选材上，以天然石材、实木、仿清水模涂料等富有自然裂纹的肌理作为立面的张力表情，借由纹理引申出温润质朴的空间氛围。设计师独具慧心，利用简洁利落的线形分割设计，化解相互冲突的材质表现，使得空间的视觉传达更为平缓、和谐。卧室的床头主墙面为原色木板垂直拼列，宽窄、深浅分割，彰显了梧桐风木皮天然粗犷的原味魅力；作为主卧室内所强调的视觉主线，且延伸原木材质运用于窗畔卧榻之中，铅灰色棉麻软包饰面再配以自然之木色地柜，不乏空间机能与色调唯美的景致享受，同时也增加了卧房舒适自在的轻盈感。







## **COLORS AND NATURAL LIGHTING** 色彩、自然采光

Cement grey and stylish black are the main colors in this space, together with the wood, one can interpret it as a space with a woody tone, the natural aura is closely interlocked with the needs of modern living. There is no break of harmony between the movement and stillness. The TV wall is decorated by rough grey cultured stone, matched with a black shelf on the left, increasing the layering of color tones. Two wooden blocks in front of a round black coffee table are like two playing children dressed in bellyband, lovely and simple, adding joy into the space. The lighting of living room is achieved through a whole area of French windows which connect to the external balcony, making the space abundant with sunlight and virescence. The sunlight penetrates through the wood window-shades and scatters on the main slate wall, while the branches on the terrace are also swaying gleamingly behind the window-shades, which produce the effect of light and shadow. The collection of light in the bedroom is achieved covertly, while the lower half of the glass is frosted to keep the privacy of the sleeping space whilst ensuring an abundance of indoor light.

水泥灰与时尚黑作为空间主色调，与木色共同演绎森调空间，将自然灵气与现代居室需求紧密相扣，动与静之间毫无违和感。电视背景墙粗犷的深灰色文化石铺陈，左边配以黑色陈列架，增加了色调层次感。黑色圆形茶几前的两个木墩，好似两个穿着肚兜玩耍的孩童，可爱淳朴，小增空间的喜感。客厅的采光是一整面通体落地窗外接阳台，拥有丰沛的日光及绿化，经由日光照射，穿透木百叶，洒落在石皮主墙上，而露台的树枝也若隐若现在在百叶窗后摇曳，产生光与影的效果。卧室的光源采集具有一丝的隐蔽性，玻璃的下半部分区域采用磨砂材质，满足睡眠空间隐私性的同时也保证了室内光线的充裕。





